

**Club Med** 

# **Kiroro Peak**

**Discover Unconventional Hokkaido**



  
**MUST-TRY**

**One Of The  
Best Powder  
Snow In The  
World**

**Horse Riding**

**Glass  
Workshop**

**Japanese-  
French Fusion  
Cuisine**

**Traditional  
Japanese  
Onsen**

# 23 Ski Slopes

ADVANCED  
9

INTERMEDIATE  
6

BEGINNERS  
8

## What's Included:

-   
SKI LIFT PASS
-   
SKI LESSONS
-   
GOURMET DINING
-   
OPEN BAR
-   
APRÈS-SKI
-   
WELLNESS
-   
ENTERTAINMENT
-   
ACCOMMODATION

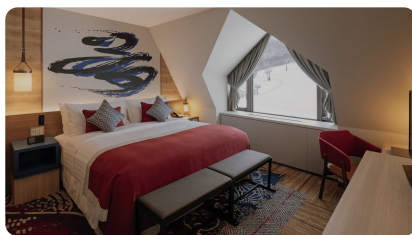
### Recipe For Happiness

- Two main international restaurants (one located at Kiroro Grand) & access three specialty restaurants located at Kiroro Grand
- Two main bars (one located at Kiroro Grand)
- An Exclusive Collection resort
- Ski-in/Ski-out of one of the best powder snow in the world
- Longer ski season with spring skiing until April

## Choose The Perfect Room

Standard Amenities For All Accommodation:

Flat screen TV, Air-conditioning/heating system, Coffee & Tea kit, Bathrobe, Sofa bed, Security safe, Type A electrical sockets (100-127 volts), Hairdryer, Ironing kit, Wi-Fi access



**Superior**  
Size: 28-39 sqm  
Occupancy: 2-3 pax



**Deluxe**  
Size: 57-69 sqm  
Occupancy: 3-4 pax



**Suite**  
Size: 77-96 sqm  
Occupancy: 5 pax

## Sports & Leisure



- Alpine Ski
- Snowboarding
- Cardio & Fitness Room
- Ofuro\*\*
- Traditional Japanese Onsen \*\*
- Rotenburo\*\*
- Sauna\*\*
- Snow Trekking
- Yoga
- Aqua Fitness\*\*

## Access to Kiroro Grand Facilities



- How To Get There**
- Gateway Express Gondola^ (3 min)
  - Shuttlebus (2-3 min)
  - Walk (10-15 min)

- Facilities in Kiroro Grand**
- Asian Hotpot Specialty Restaurant
  - Sushi Specialty Restaurant\*
  - Yakiniku Specialty Restaurant\*
  - Traditional Japanese Onsen\*
  - Indoor Heated Swimming Pool

## Additional\*

- Club Med Boutique
- Excursions
- Club Med Spa by Mandara
- Photographer

## Age Limit

Minimum age access to Kiroro Peak: 12 years and above

## Flight & Transfer

Club Med offers you the option to include flights and transfers with the best airlines at the best price\*

## Arrival

New Chitose Airport (90 min)

\* At extra cost  
\*\* At Kiroro Grand  
^ During operational hours

