

Japan

# Kabira Ishigaki



## Resort Highlights

- Located on a UNESCO World Heritage site, this resort is surrounded by emerald coral-reef seas and pristine beaches.
- Discover world famous manta diving and windsurfing spots, or take a snorkel to admire the turquoise waters rich marine life.
- Immerse in Okinawan culture with guided sanshin, dance or cooking lessons, and delight in authentic gastronomical dishes.
- The resort features modular meeting rooms that can host meetings and groups for up to 80 people.



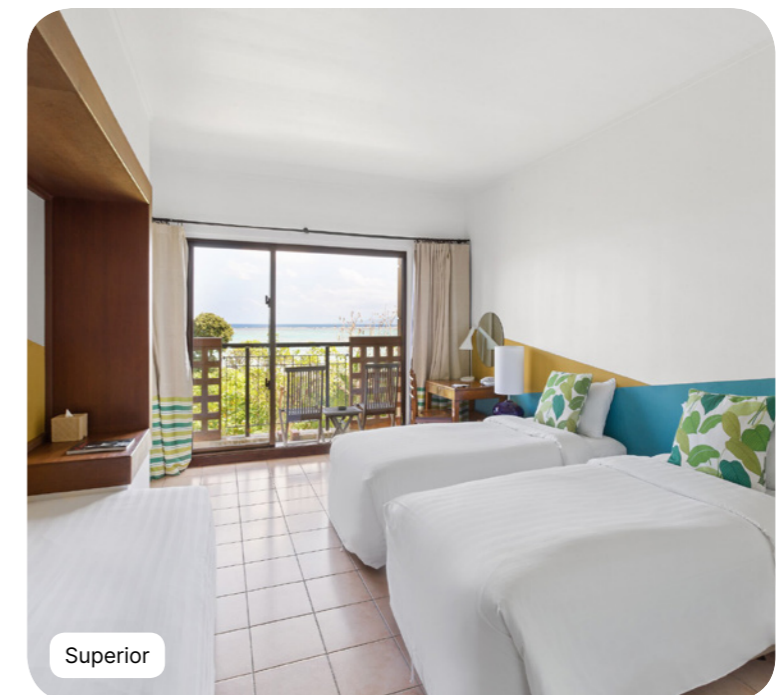
# Summary

<b>Accommodation</b>	<b>4</b>
<b>Corporate events</b>	<b>12</b>
<b>Sports &amp; Activities</b>	<b>18</b>
<b>Swimming Pools</b>	<b>22</b>
<b>Club Med Spa by Mandara*</b>	<b>24</b>
<b>Excursions*</b>	<b>25</b>
<b>Restaurants &amp; Bars</b>	<b>26</b>
<b>Practical Information</b>	<b>28</b>



# Accommodation

181 rooms



## Superior



Name	Min. m <sup>2</sup>	Highlights	Capacity
Junior Family Superior Room	31	Furnished balcony	1 - 3
Family Superior Room	31	Furnished balcony	1 - 4
Interconnecting Junior Family Superior Rooms	62	Balcony	4 - 6

### Equipment

- Air conditioning
- Baby bed (Must be pre-booked)
- Baby equipment kit
- Telephone
- TV Screen
- Wi-Fi Access
- Kettle - Coffee/tea making facilities
- Mini fridge at your disposal
- Safe deposit box
- Heating
- Electricity : 100-127 V

### Bathroom

- Bathtub
- Separate toilets
- Slippers
- Hair dryer
- Magnifying mirror

### Services

- Laundry service (extra charge)
- Luggage service

## Deluxe



Name	Min. m <sup>2</sup>	Highlights	Capacity
Junior Family Deluxe Room - Sea View	31	Sea View, Furnished balcony	1 - 3
Interconnecting Junior Family Deluxe Rooms - Sea View	62	Sea View, Furnished balcony	4 - 6
Junior Family Deluxe Room - Terrace, Garden	31	Garden side, Furnished terrace	1 - 3
Family Deluxe Room - Terrace, Garden	31	Garden side, Furnished terrace	1 - 4
Interconnecting Junior Family Deluxe Rooms - Terrace, Garden	62	Garden side, Furnished balcony	4 - 6

### Equipment

- Air conditioning
- Baby bed (Must be pre-booked)
- Baby equipment kit
- Telephone
- TV Screen
- Wi-Fi Access
- Kettle - Coffee/tea making facilities
- Iron and ironing board in the room
- Umbrella
- Safe deposit box
- Heating
- Electricity : 100-127 V

### Bathroom

- Bathtub
- Separate toilets
- Slippers
- Hair dryer
- Magnifying mirror
- Spa brand amenities : shampoo, shower gel, body lotion

### Services

- Laundry service (extra charge)
- Beach towel
- Luggage service
- Minibar (non-alcoholic drinks) - refilled weekly

## Suite



Name	Min. m <sup>2</sup>	Highlights	Capacity
Suite	62	Separate Living Room, Furnished balcony	1 - 4

### Equipment

- Air conditioning
- Baby bed (Must be pre-booked)
- Baby equipment kit
- Telephone
- Sofa
- TV Screen
- Wi-Fi Access
- Espresso machine
- Kettle - Coffee/tea making facilities
- Iron and ironing board in the room
- Umbrella
- Safe deposit box
- Heating
- Electricity : 100-127 V

### Bathroom

- Bathtub
- Shower
- Separate toilets
- Bathrobe
- Slippers
- Hair dryer
- Magnifying mirror
- Spa brand amenities : shampoo, shower gel, body lotion

### Services

- Free lunch for G.M® who arrive before 3pm
- Luggage service in room
- Inclusive of room service for continental breakfast
- Turn down service
- Laundry service (extra charge)
- Beach towel
- Cleaning service at a time of your choosing
- Upgrade transfer for G.M® with transfer package
- Minibar (non-alcoholic drinks) - refilled daily

# Corporate events

Convention, seminar, privatisation, incentive, team building...  
Whatever your needs, our experts will work with you from A to Z  
to design your event.



## Meeting rooms



Meeting Room / Capacity	In U shape	In conference	In classroom	In theater
Fushi 5.83 × 7.85m / 140 m <sup>2</sup>	18	24	30	56
Teda 5.88 × 7.85m / 140 m <sup>2</sup>	18	24	30	56
Teda+Fushi 11.71 × 7.85m / 280 m <sup>2</sup>	27	36	70	100
Théâtre - Espace Ouvert	-	-	-	350

### Included equipment

- Video projector & projection screen
- Wifi
- Paperboard
- Pencil and Flip chart
- Mineral water

# Enhance your event

From private cocktails to team building and coffee breaks...  
Create an event that reflects your image !



## Team Buildings & Events\*

To unite your teams and create unforgettable experiences, we offer a wide range of customised concepts, tailored events, and unique entertainment options designed to meet your expectations.

## Cocktails and Coffee breaks\*

Understanding that the success of your events also relies on private, convivial moments, we offer a range of exclusive cocktail and coffee break services tailored to your needs.

\*on demand

# Sports & Activities



## Water Sports

	Group Lessons	Free Access	At extra cost course	Min. age (years)
Scuba diving*		✓	✓	10 years old
Windsurfing	Group lessons for all levels			8 years old
Kayak	Free access			14 years old
Snorkeling	Initiation group lessons			8 years old
Stand up Paddle	Free access			8 years old

\*on demand  
\*\*depending on daily weather and tide conditions



## Land Sports & Leisure

	Group Lessons	Free Access	At extra cost course	Min. age (years)
Archery		✓		
Biking	All levels			11 years old
Fitness	Group lessons for all levels			16 years old
Tennis	Group lessons for all levels			4 years old
Flying trapeze & circus activities		✓		4 years old
Yoga	Initiation group lessons			11 years old
Team sports	Free access			8 years old
Entertainment		✓		
Badminton	Free access			11 years old
Bocce ball	Free access			
Guided walks	All levels			11 years old
Squash	Free access			8 years old
Table tennis	Free access			
Cardio Training	Free access			16 years old
Sanshin lessons				
Excursion*		✓	✓	
Swimming Pools	Group lessons for all levels			16 years old

\*on demand  
 \*\*depending on daily weather and tide conditions  
 \*\*\* Pre-bookable green fee packages at extra cost

# Swimming Pools



## **Main swimming pool** Outdoor Pool

This outdoor freshwater overflow pool with two swimming areas, one for children less deep, is located at the heart of the Resort. Supervised pool and paddling pool separated. Water games organized.

Children are under the supervision of their parents or an accompanying adult.

## **Children's swimming pool** Outdoor Pool

At Petit Club Med and Mini Club Med, your children can have fun in the paddling pool, protected from the sun, and shallow pool, both supervised. Young G.Ms love cooling off in the water, whether they are playing games, trying sports or simply relaxing.



## Club Med Spa by Mandara\*



Discover one of the most ancient of Asian rituals, blending beauty and exotic luxury. Combining Balinese traditions and European techniques, Mandara makes the art of treatment an experience of generosity. Since the dawn of time, this passion for equilibrium and the moment of grace touches the very soul.



\*on demand

## Excursions\*



### Nature getaways :

Blue Cave Snorkeling / Glass boat / Island Hopping / Kabira Strolling / Manta Snorkeling / Kohama Island

### Connecting with culture :

Shisa painting

\*on demand

## Restaurants & Bars



### Bars

#### Tingara

Main bar  
56 seats inside / 44 seats outside

#### White Pearl

Beach Bar

## Restaurants

### The main restaurant

Main Restaurant  
585 seats inside /



Dine and delight. Savour a variety of local and multi-national menu items: Okinawan, Japanese, Korean, Chinese, French, Italian, and Western classics. Sample traditional Okinawan flavours with ingredients known for promoting longevity and for their health benefits. Take in 180-degree sea views from any of our 3 themed rooms designed to highlight the sand, grass, and ocean. You will appreciate discovering the fresh and healthy recipes conceptualised by Chief Samantha Gowing.

# Practical Information



Front desk Réception	Discovery Center Espace Découverte	Pool Piscine	Flying Trapeze Trapèze	Paddle	Table tennis Tennis de table
Rooms Chambres	La boutique	Club Med Spa	Archery Tir à l'arc	Scuba diving Plongée Bouteille	Soccer Football
Restaurant	Petit Club Med	Yoga	Bocceball Pétanque	Snorkeling	Biking Vélo
Bar	Mini Club Med +	Fitness	Kayak	Squash	Basketball
Meeting Room Salle de réunion	Theatre Théâtre	Cardio Training	Windsurfing Planche à voile	Tennis	Beach volley

## Address

CLUB MED KABIRA ISHIGAKI  
ISHIGAKI 1

BANCHI, KABIRA-ISHIGAKI CITY, OKINAWA, Okinawa  
907-0453, Japan

No minimum age

## CHECK-IN/CHECK-OUT

Times of arrival/departure from the Resort

For GM arrival with stay package / stay package inclusive transfer only (flight not booked with Club Med):

For all stays, arrival between 3pm and 8pm. G.M@s who arrive early may be able to have lunch at extra cost, subject to availability.

Availability of rooms: between 3pm and 8pm.

Rooms to be vacated by 10am on day of departure, for departure from the Resort by 3pm (breakfast and lunch included).

Should any of these times change, the revised times will be given in your "Holiday Rendez-Vous".

For GM arrival with flights booked with Club Med:

- Room to be allocated as soon as possible according to availability

- Food & Beverage service access to resort facilities and F&B services are included from arrival until departure time

## Nearest arrival points

➔ Ishigaki airport (30 mins.)